

# Usage Guide for Packets Wireshark® Plugin

Download the plugin by clicking [here](#) and get started in 3 easy steps :

1. [Install Packets Wireshark plugin](#)
2. [Configure your Packets account](#)
3. [Use the plugin to analyse packet capture on cloud](#)

## Step 1: Installation

### Linux

Open the terminal and extract the installation package, using following command.

```
tar -xvh Packets_plugin.tar
```

Change the directory to the newly created folder and run the install script using following commands.

```
chmod +x install-unix  
./install-unix
```

```
lap-208@LAP-208:~/Downloads/packets_plugin$ ./install-unix  
Installing Packets Plugin for wireshark...  
  
Installing plugin at - /home/lap-208/.config/wireshark/plugins/packets/  
Installing default plugin configuration file.  
The Packets Plugin for Wireshark is now installed.  
Please restart Wireshark.  
  
Visit https://packets.arista.com for additional help  
lap-208@LAP-208:~/Downloads/packets_plugin$
```

### Windows

Run the downloaded **Packets\_plugin.exe** and let the setup wizard guide you through the installation process.

### MacOS

Run the downloaded Packets\_plugin.pkg and the let the setup wizard guide you through the installation process.

## Step 2: Configuration

You need to configure your Packets account in the Wireshark plugin before you can start using it seamlessly.

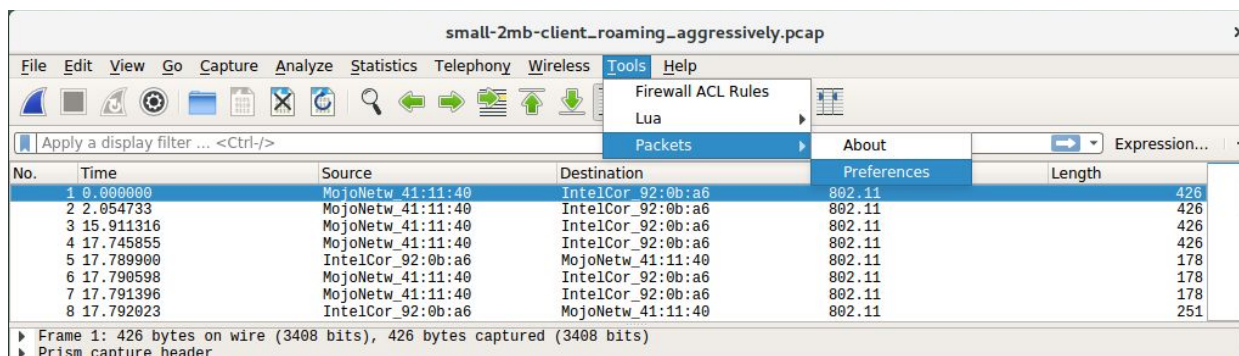
On Packets online tool, click your name in the top-right corner. In the drop-down, click **Wireshark Config**. Your config file will appear in a pop-up box. Copy it.

```
-- This is the configuration file for the Packets plugin.  
  
-- User: Enter the your Packets account email here.  
  
PACKETS_USER = "  
  
-- Api key: unique Api key generated from mojo packets ui. (required to access the  
service)  
  
PACKETS_API_KEY = '  
  
-- When used from Wireshark, the plugin will attempt
```

[Regenerate Config File](#)

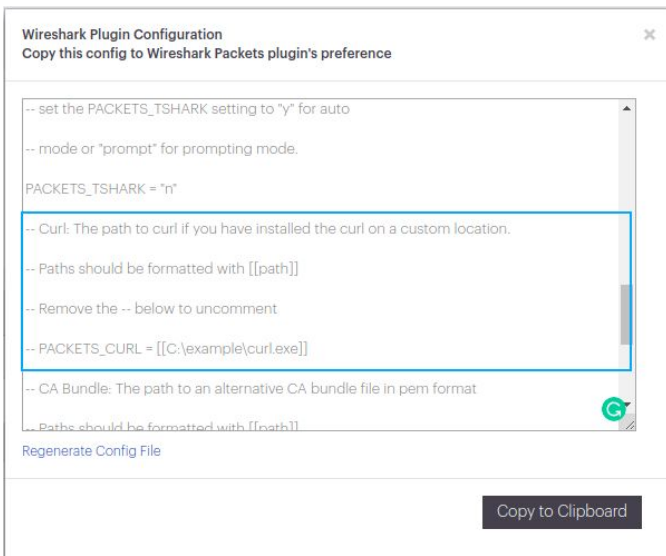
Copy to Clipboard

Open Wireshark, go to Tools menu. In the drop-down, go to Packets and click Preferences. Paste the config file in the box and click Save. You may edit this file to configure advanced settings.



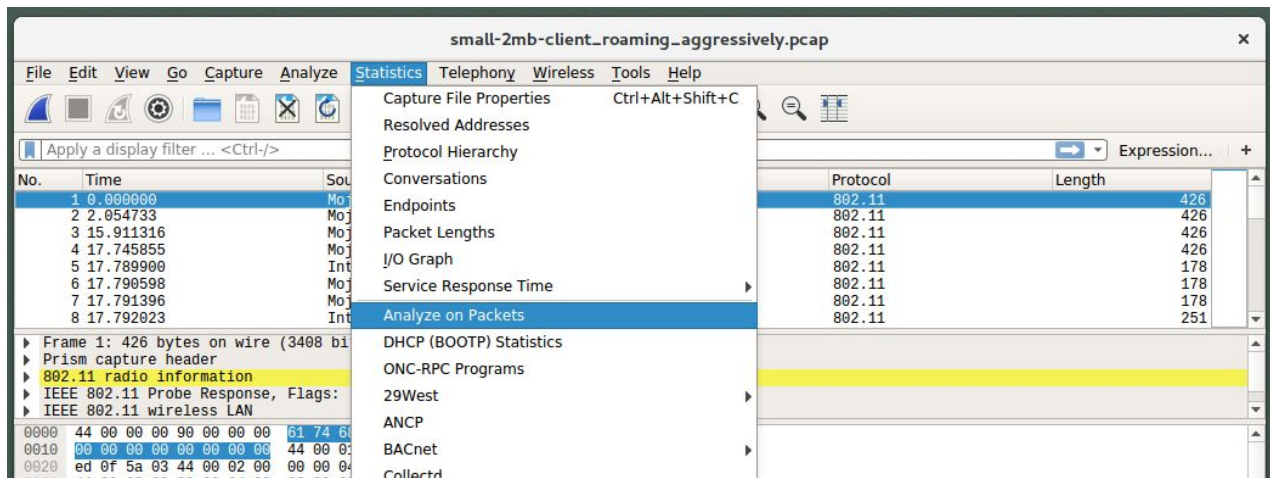
**Windows users** will have to additionally set the CURL path in the configuration file, to wherever they have installed CURL on their machine.

Default location is - "C:\Program Files (x86)\CURL\curl.exe"



### Step 3 : Usage

Capture or open a packet trace in Wireshark. Select **Analyze** or **Statistics** in menu bar (Analyze for Wireshark legacy and Statistics for Wireshark). From the drop-down, click **Analyze on Packets**. This will upload your file to your Packets account and automatically start the processing on the server. Once done, it will open the packet capture in your default browser for visual analysis. That's it!



If you have configured the advanced options in the config file, you can enter a client MAC address as well before uploading, which will take you directly to the connectivity graph for the client.